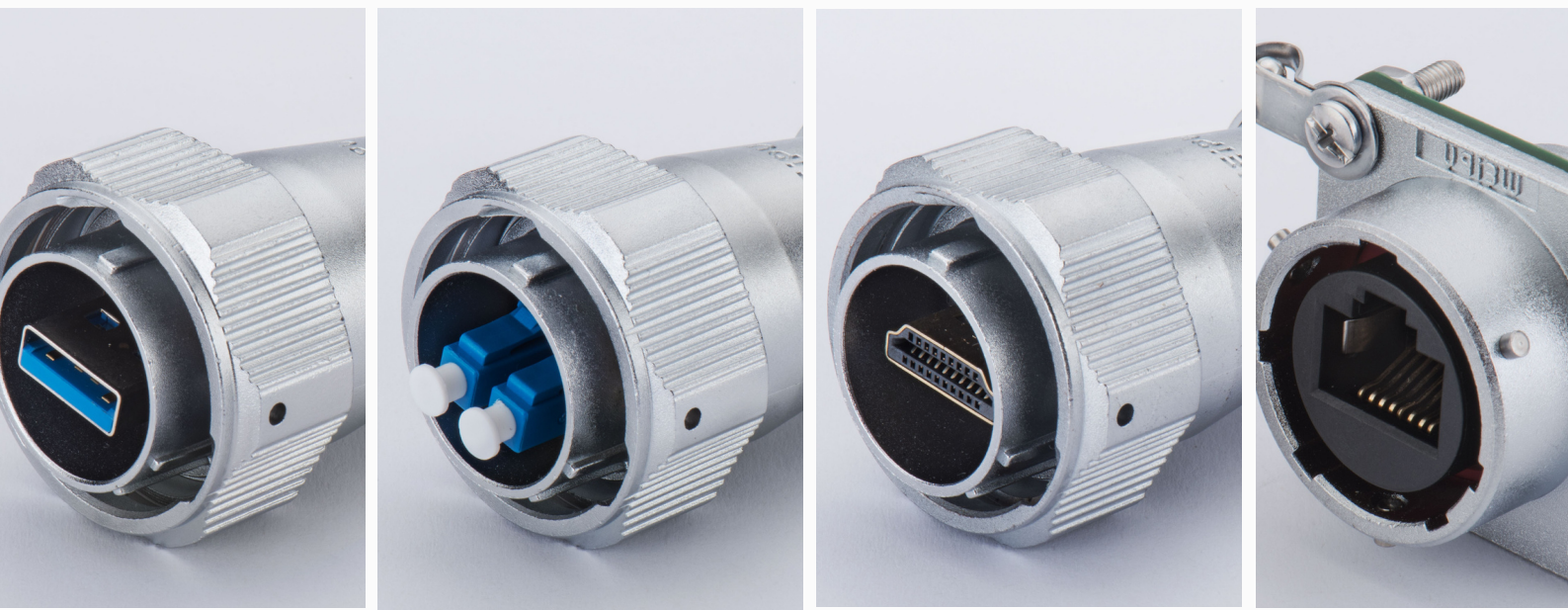


SIGNATURE SERIES



Data Connector

High-performance
signals and faster data
transmission

according to the latest standards





UPGRADE YOUR SYSTEMS WITH WEIPU'S SOLUTION



SA24 SERIES

- IP67 Protection
- Push-pull coupling
- Shell Material: Anodized aluminum
- RJ45/USB3.0/LC/HDMI2.0
- Speed: RJ45 (100MB/S), USB3.0 (5GB/S), HDMI2.0 (18GB/S), LC
- Temperature range: -20°C~+70°C
- Mating Cycle: 1000 times (USB3.0); 500 times (LC/HDMI2.0/RJ45)
- Color options: Standard: Black/Silver; Special: Blue/Green/Red

Data Series

Feature



Fast locking mechanism



IP67 High-level sealing



Metal & Plastic material



RJ45/USB3.0/LC/HDMI2.0



Anti-vibration

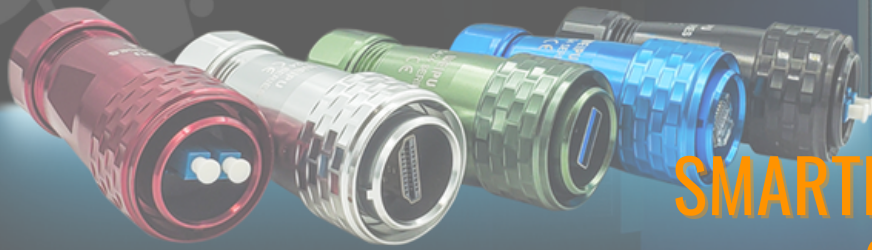


Up to 1500 mating cycles



WY24 SERIES

- IP67 Protection
- Bayonet coupling
- Shell Material: Zinc alloy with chrome plating
- USB3.0/LC/HDMI2.0/RJ45
- Speed: RJ45 (100MB/S), USB3.0 (5GB/S), HDMI2.0 (18GB/S), LC
- Temperature range: -20°C~+70°C
- Mating Cycle: 1500 times (USB3.0); 500 times (LC/HDMI2.0/RJ45)



SMARTER, LIGHTER, QUICKER- CONNECTING THE NEXT GENERATION



SY25 SERIES

- IP67 Protection
- Bayonet coupling
- Shell Material: PC, Nylon66
- USB3.0/LC/HDMI2.0/RJ45
- Speed: RJ45 (100MB/S), USB3.0 (5GB/S), HDMI2.0 (18GB/S), LC
- Temperature range: -20°C~+70°C
- Mating Cycle: 1500 times(USB3.0); 1000 times (LC); 500 times (HDMI2.0/RJ45)



RJ45 SERIES

- IP67 Protection
- Bayonet coupling
- Shell Material: PC
- ethernet Class D/Cat.5e and Class E/Cat 6 (10 Base T, 100 base TX, 1000 Base T networks)
- Temperature range: -40°C~+85°C
- Mating Cycle: 500 times

APPLICATIONS



Automation



Test & Measurement



Renewable Energy



LED Lighting



Electric Mobility & Battery



5G & Telecommunication